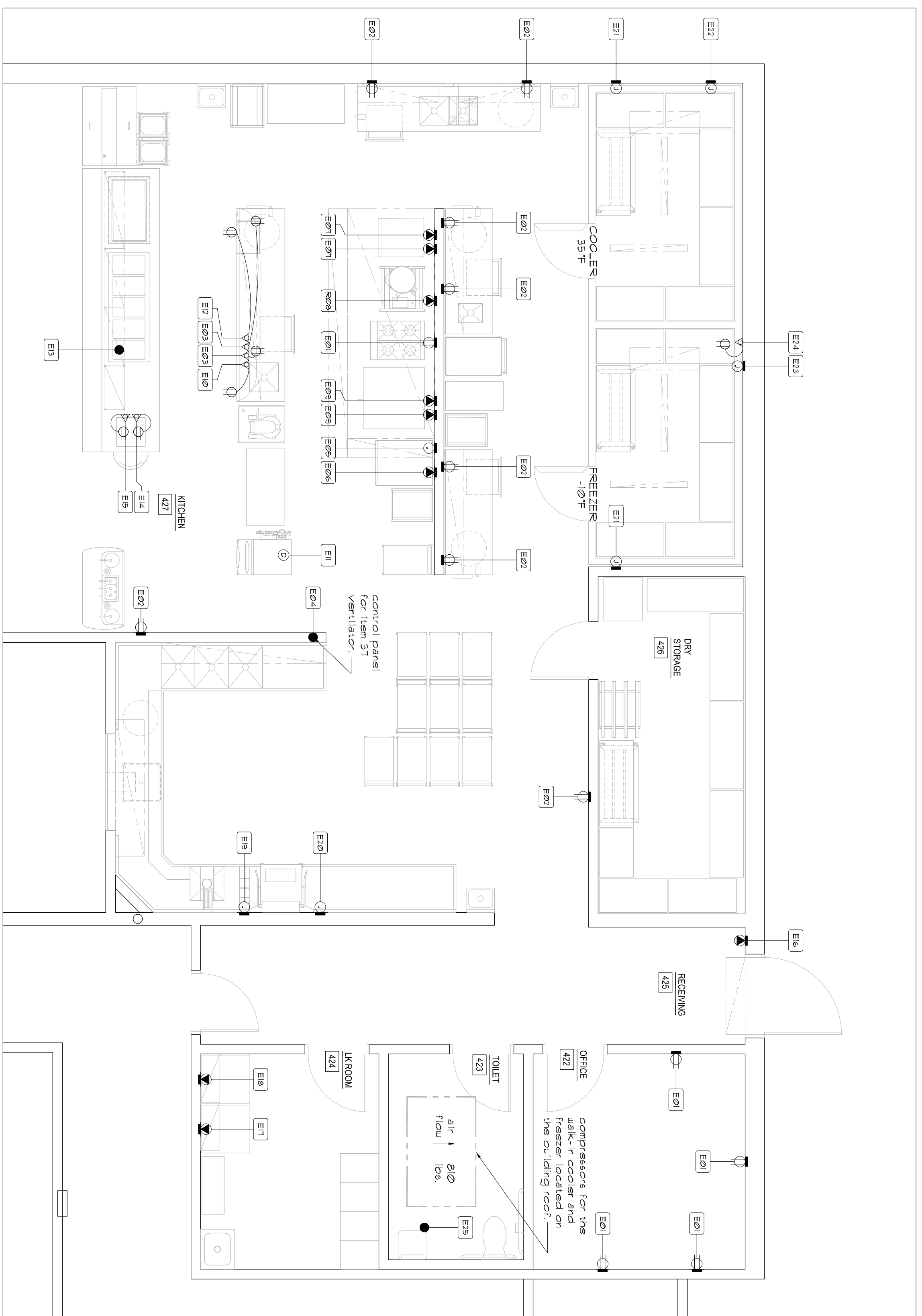
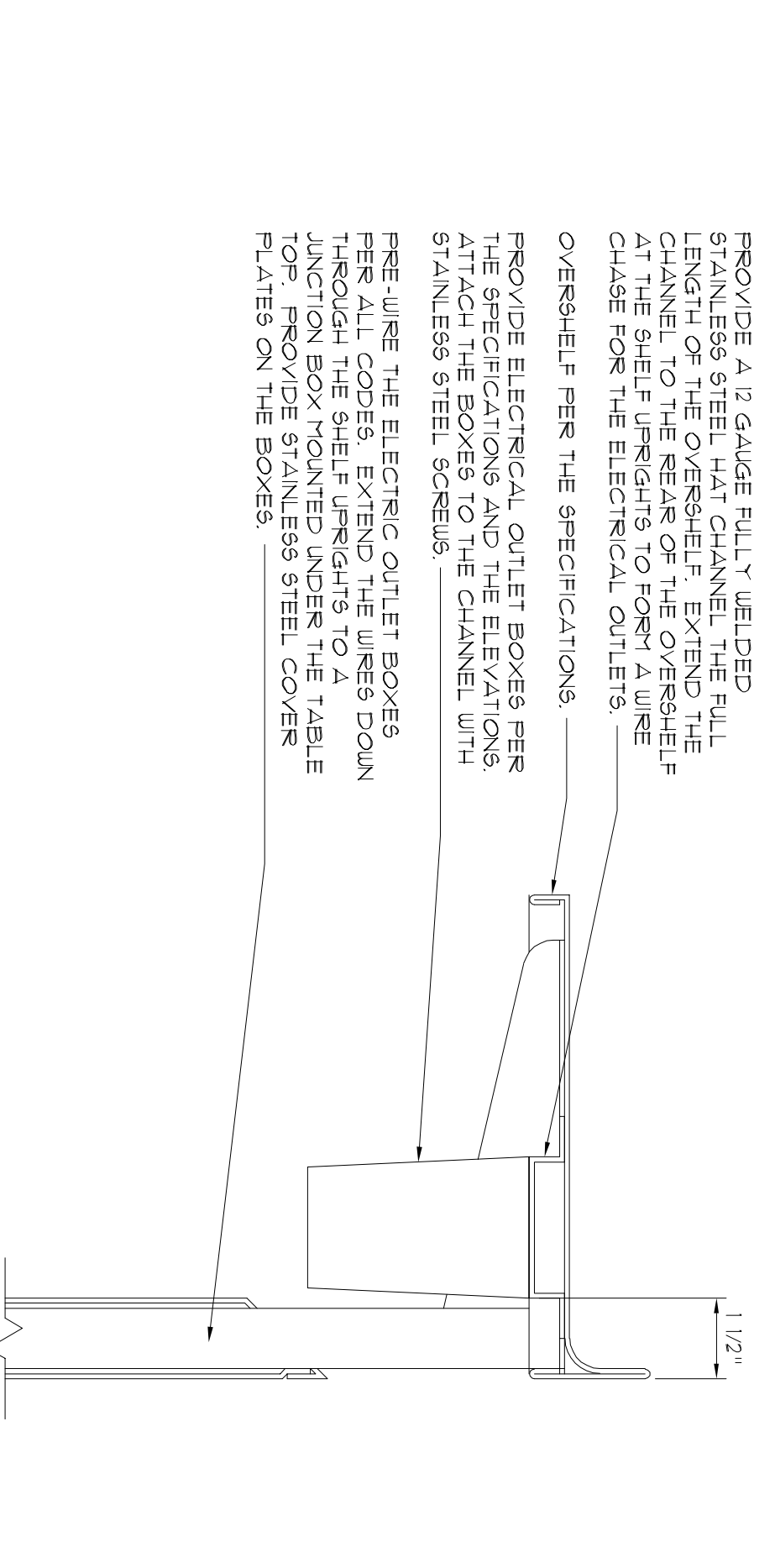
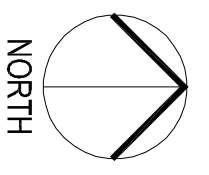


ELECTRICAL CONNECTIONS SCHEDULE

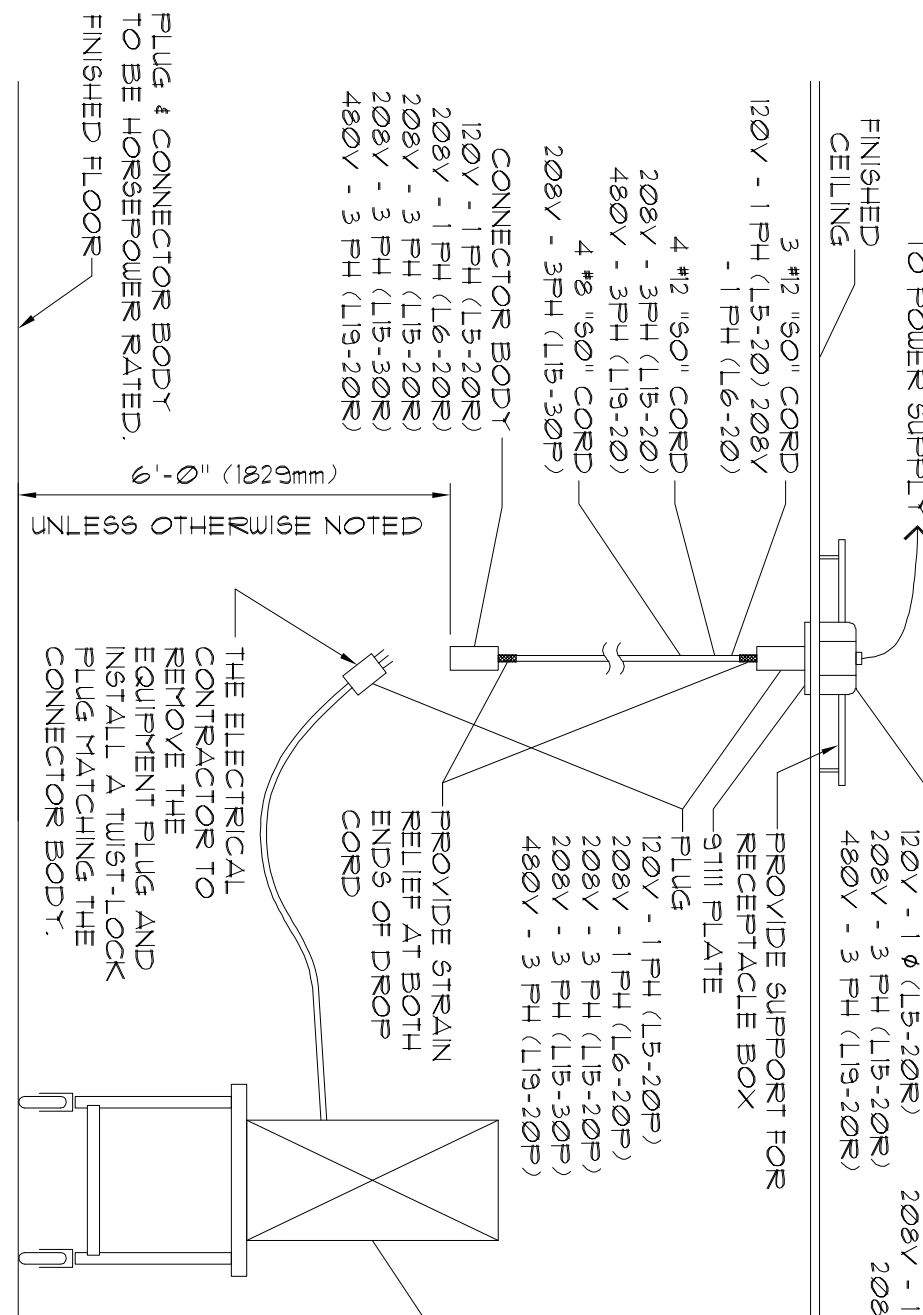
NO.	ITEM NO.	CONN.	SERVICE TO	RATING	VOLTS	PH.	LOCATION	DEF.	REMARKS
E01	34		CONVENIENCE	16.0 A	120	1	WALL	12"	RATING ASSESSED AS 1200 A OUTLET.
E02	24, 25	DR	CONVENIENCE	16.0 A	120	1	WALL	50"	RATING ASSESSED AS 1200 A OUTLET.
E03	41, 42	C9R	CONVENIENCE	16.0 A	120	1	FLOOR	9"	SEE DETAIL 2, 3 SHEET F9401.
E04	4, 45	C6	VENTILATION FAN SYSTEM	5.0 A	120	1	WALL	48"	BTC
E05	31	9R	REFRIGERATION SYSTEM	132.0 KU	120	1	WALL	50"	BTC
E06	35	9R	PROOF-HOT CABINET	8.0 KU	208	1	WALL	12"	CONDUCTOR & FLUG BY THE ELECTRICAL CONTRACTOR
E07	36	9R	CONVECTION STEAMER	8.0 KU	208	1	WALL	12"	CONDUCTOR & FLUG BY THE ELECTRICAL CONTRACTOR
E08	21	9R	1/2 GALLON FRY KETTLE	120.0 KU	208	3	WALL	12"	CONDUCTOR & FLUG BY THE ELECTRICAL CONTRACTOR
E09	33	9R	CONVECTION OVEN	1/2 HP	120	1	FLOOR	12"	BTC - SEE DETAIL 2, SHEET F9401
E10	43	9R	20 QUART MIXER	1/2 HP	120	1	FLOOR	9"	CONDUCTOR & FLUG BY THE ELECTRICAL CONTRACTOR (SEE DETAIL 2, SHEET F9401)
E11	45	DCR	ICE MAKER	13.5 A	120	1	CEILING	9"	BTC - SEE DETAIL 2, SHEET F9401
E12	42	9R	MICROVAIVE	15.0 KU	120	1	FLOOR	9"	120 AMP LOAD CENTER IN THE ELECTRICAL CONTROL ROOM
E13	48	C5	SERVING COUNTER	23.0 A	208	3	FLOOR	9"	CONTRACTOR 4 WIRE LOAD 9HOUN IS ACTUAL LOAD PLUS 25%.
E14	52	C9R	POS SYSTEM	12.0 A	120	1	FLOOR	9"	PROVIDE AN EMPTY CONDUIT FOR DATA
E15	52	C9R	POS SYSTEM	FLOOR	9"	VERIFY THE CONDUIT SIZE AND ENDING
E16	01	9R	AIR DOOR	1 HP	120	1	WALL	90"	CONDUCTOR & FLUG BY THE ELECTRICAL CONTRACTOR
E17	05	9R	WASHER	120.0 A	120	1	WALL	50"	BTC
E18	06	9R	DRYER	300.0 A	120	1	WALL	50"	BTC
E19	11	JB	DRAIN WATER TEMPERING KIT	5.0 A	120	1	WALL	12"	BTC
E20	11	JB	DISHWASHER	1 HP	208	3	WALL	18"	BTC
E21	08	JB	WALK-IN LIGHTS & HEATER	6.0 KU & 6.0 A	120	1	WALL	108"	BTC - PENETRATE THE WALK-IN THROUGH THE TOP OF THE CONDUIT NEAR THE CEILING IN A NEAT MANNER. SEAL THE HOLE AND THE CONDUIT IN AN AIR TIGHT MANNER.
E22	08	JB	WALK-IN EVAPORATOR	1.0 A	208	1	WALL	108"	BTC - PENETRATE THE WALK-IN THROUGH THE TOP OF THE CONDUIT NEAR THE CEILING IN A NEAT MANNER. SEAL THE HOLE AND THE CONDUIT NEAR THE CEILING IN A NEAT MANNER. SEAL THE HOLE AND THE CONDUIT IN AN AIR TIGHT MANNER.
E23	08	JB	WALK-IN EVAPORATOR	9.8 A	208	1	WALL	108"	BTC - PENETRATE THE WALK-IN THROUGH THE TOP OF THE CONDUIT NEAR THE CEILING IN A NEAT MANNER. SEAL THE HOLE AND THE CONDUIT IN AN AIR TIGHT MANNER.
E24	07	C9R	WALK-IN HEAT TAPE	16.0 A	120	1	WALL	108"	BTC - PENETRATE THE WALK-IN THROUGH THE TOP OF THE CONDUIT NEAR THE CEILING IN A NEAT MANNER. SEAL THE HOLE AND THE CONDUIT IN AN AIR TIGHT MANNER. AND INSTALL A RECEPTACLE IN THE WALK-IN FOR THE HEAT TAPE.
E25	08	C6	REFRIGERATION SYSTEM	210.0 A	1208	3	ROOF	9"	BTC



1 FOODSERVICE EQUIPMENT ELECTRICAL CONNECTIONS PLAN
1/4" = 1'-0"



2 DETAIL - ELECTRICAL BOXES AT THE OVERSHELVES
NO SCALE



3 TYPICAL DETAIL DROP CORD RECEPTACLE
NO SCALE

ELECTRICAL SYMBOLS

	DRI DUPLEX RECEPTACLE
	1 PH SINGLE PHASE RECEPTACLE
	JB JUNCTION BOX IN WALL
	CS CONDUIT STUB UP/OUT
	DCB DROP CORD RECEPTACLE
	C9R CONDUIT STUB - BTC AT RECEPTACLE FURNISHED WITH EQUIP.
	BTC BRANCH TO CONNECTION
	DFL DROP FROM ABOVE

ELECTRICAL NOTES

- DO NOT ROUGH-IN FROM THIS DRAWING. REFER TO CONTRACTOR'S DIMENSIONED DRAWINGS.
- VERIFY ALL ELECTRICAL CHARACTERISTICS WITH ARCHITECT'S ENGINEERING DRAWINGS.
- DIMENSIONS INDICATED ARE TO BE VERIFIED BY THE FOODSERVICE CONTRACTOR AND ADJUSTED AS REQUIRED BY THE FOODSERVICE EQUIPMENT AND/OR FIELD CONDITIONS.
- REFER TO ARCHITECT'S DRAWINGS FOR CLOCKS, 67AMP TIME CLOCKS AND COMMUNICATION SYSTEMS IN FOODSERVICE AREAS.
- THE FOLLOWING WORK IS BY THE ELECTRICAL CONTRACTOR. REFER TO THE ELECTRICAL DRAWINGS AND/OR SPECIFICATIONS FOR ADDITIONAL INFORMATION.
- FIELD INSTALLATION OF ACCESSORIES & FITTINGS PROVIDED LOOSE WITH THE FOODSERVICE EQUIPMENT.
- ALL RECEPTACLES PER CODES.
- CONDUIT AND WIRING BETWEEN THE WALK-IN COOLER AND FREEZER AND DEFROST HEATING ELEMENTS.
- CONDUIT AND WIRING FROM EXHAUST HOOD FIRE EXTINGUISHING CYLINDER SHUT-OFF DEVICES AND ALARMS.
- CONTRACTOR OR SHUT-OFF BREAKER FOR FUEL SHUT-OFF TO ALL ELECTRICAL HEATED COOKING EQUIPMENT INDICATED ON DRAWINGS. FUEL SHUT-OFF DEVICE SHALL BE ACTUATED BY FIRE EXTINGUISHING SYSTEM DETECTOR LOCATED IN EXHAUST HOOD.
- PENETRATIONS IN THE WALK-IN COOLERS AND FREEZERS MUST BE SEALED IN AN AIR TIGHT MANNER. INSTALL STAINLESS STEEL ESQUICHON FLANGE ON THE INTERIOR AND EXTERIOR OF THE UNITS. SEAL THE ESQUICHON FLANGE WITH SILICONE SEALANT.

NOTES

THE ELECTRICAL CONTRACTOR TO ROUGH-IN FROM THE FOODSERVICE CONTRACTOR'S ROUGH-IN DRAWINGS ONLY. THE ELECTRICAL CONTRACTOR WILL TAKE FULL RESPONSIBILITY FOR THE ROUGH-IN LOCATIONS IF THE FOODSERVICE AND/OR ELECTRICAL DRAWINGS ARE USED FOR THIS WORK.

AGP
the Abia Griffin Partnership L.L.C.
313 S. E. 5th Street
MOORE, OK 73160
405.735.3477
AGP@theAGP.net
www.theAGP.net

CEDAR CREEK
CIVIL
KFC ENGINEERING
STRUCTURAL
SALAS OBRIEN
MECHANICAL/ELECTRICAL

MOORE
PUBLIC SCHOOLS

CHILD CARE FACILITY
201 N. EASTERN AVE.
FS401

OWNERSHIP USE OF DOCUMENTS:
AGP EXPRESSLY RESERVES ITS COPYRIGHT AND OTHER PROPERTY RIGHTS OF ALL PLANS AND DRAWINGS DESIGNED AND/OR PRODUCED. PLANS AND DRAWINGS ARE NOT TO BE REPRODUCED IN ANY MANNER OR MANNER CONSISTENT WITH AGP.